



2023 FARM CAMP



REGISTRATION CLOSES MAY 15 OR WHEN FULL
WWW.RODENBARNYARD.COM | RODENBARNYARD@GMAIL.COM

*Please limit one week per child due to limited spots this year. Little Farmers max of 3 days

Little Farmers (age 4-6)

June 13 | June 14 | June 15 | Aug 8 | Aug 9 | Aug 10

Choose your days | Half Day 8AM-11AM (\$54) | Full Day 8AM-2PM (\$76)

Regular Farm Camp (age 7-12)

June 19-22 [M-Th] 8AM-3PM (\$360) *BABY CHICKS ARRIVE* (age 7-12)

July 17-20 [M-Th] 8AM-3PM (\$335) (age 7-12)

July 24-27 [M-Th] 8AM-3PM (\$335) (age 7-12)

*Families are invited at the end of camp on the last day for a farm tour and ice cream

Calf Camp (age 9-14)

June 26-29 [M-Th] 8AM-3PM (\$390)

July 10-13 [M-TH] 8AM-3PM (\$390)

*Strongly encourage campers to attend Regular Camp first

*An advanced version of regular camp where campers have the opportunity to interact more with a calf by walking them on a halter & possibly washing them.

*Guest Speakers may include veterinarian, nutritionist or other farm specialists

*Families are invited at the end of camp on Thursday to meet the calf

Advanced Farm Camp (age 10-14)

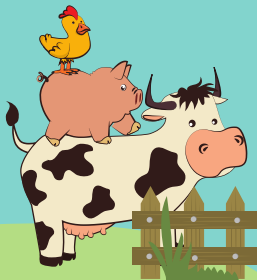
*Must have attended a Regular Farm Camp in the past

August 14-16 [M-W] 8AM-3PM (\$250)

*Campers will work on teams of 3-4 people to complete challenges each day;

One team will be determined the winner on day 3. Pick a teammate that is strong, smart, speedy and maybe short to help you succeed at each challenge.

**Example of Challenges: Assemble a calf pen. Measure the length of a barn. Calculate the feed rations. Move a straw bale. Climb over a gate.



Location: 5545 County Road Y - West Bend, WI 53095