



# 2022 FARM CAMP



REGISTRATION CLOSES MAY 15 OR WHEN FULL  
[WWW.RODENBARNYARD.COM](http://WWW.RODENBARNYARD.COM) | [RODENBARNYARD@GMAIL.COM](mailto:RODENBARNYARD@GMAIL.COM)

## Little Farmers (age 4-6)

June 28 | June 29 | June 30 | Aug 9 | Aug 10 | Aug 11

Choose your days | Half Day 8AM-11AM (\$50) | Full Day 8AM-2PM (\$72)

## Regular Farm Camp (age varies)

**\*Please limit one week of Regular Camp per child.**

June 13-16 [M-Th] 8AM-3PM (\$350) **\*BABY CHICKS\*** (age 7-13)

June 20-22 [M-W] 8AM-3PM (\$225) (age 5-8)

July 25-28 [M-Th] 8AM-3PM (\$300) (age 7-10)

AUG 15-18 [M-TH] 8AM-3PM (\$300) (age 7-10)

\*Families are invited at the end of camp on the last day for a farm tour and ice cream

## Calf Camp (age 9-14)

July 11-14 [M-Th] 8AM-3PM (\$350)

July 18-21 [M-TH] 8AM-3PM (\$350)

\*Strongly encourage campers to attend Regular Camp first

\*An advanced version of regular camp where campers have the opportunity to interact more with a calf by walking & washing them.

\*Families are invited at the end of camp on Thursday to meet the calf

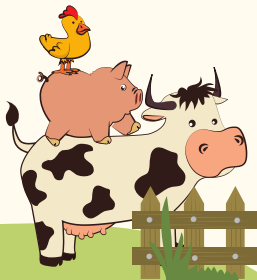
## Advanced Farm Camp (age 10-14)

**\*Must have attended a Regular Farm Camp in the past**

August 22-24 [M-W] 8AM-3PM (\$225)

\*Campers will work on teams of 3-4 people to complete challenges each day; One team will be determined the winner on day 3. Pick a teammate that is strong, smart, speedy and maybe short to help you succeed at each challenge.

*\*\* Example of Challenges: Assemble a calf pen. Measure the length of a barn. Calculate the feed rations. Move a straw bale. Climb over a gate.*



Location: 5545 County Road Y - West Bend, WI 53095